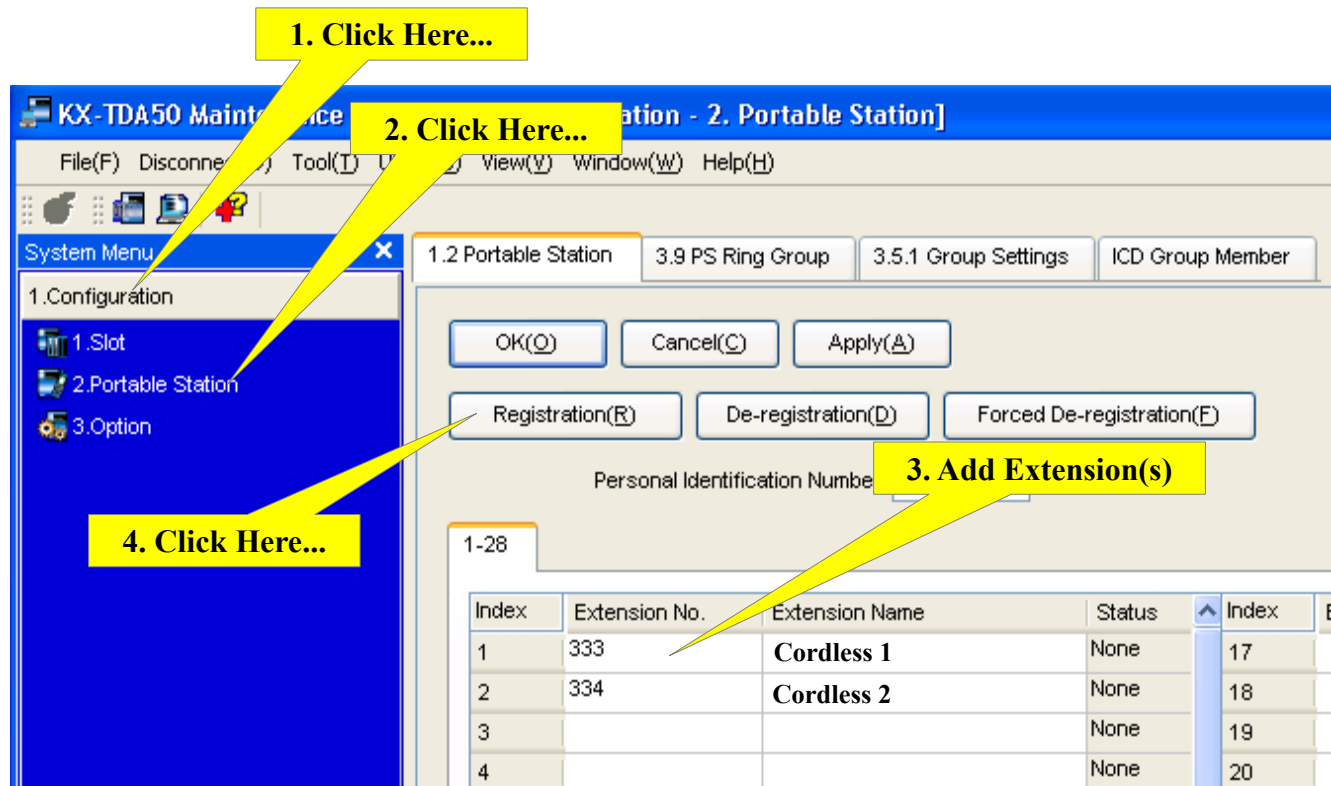


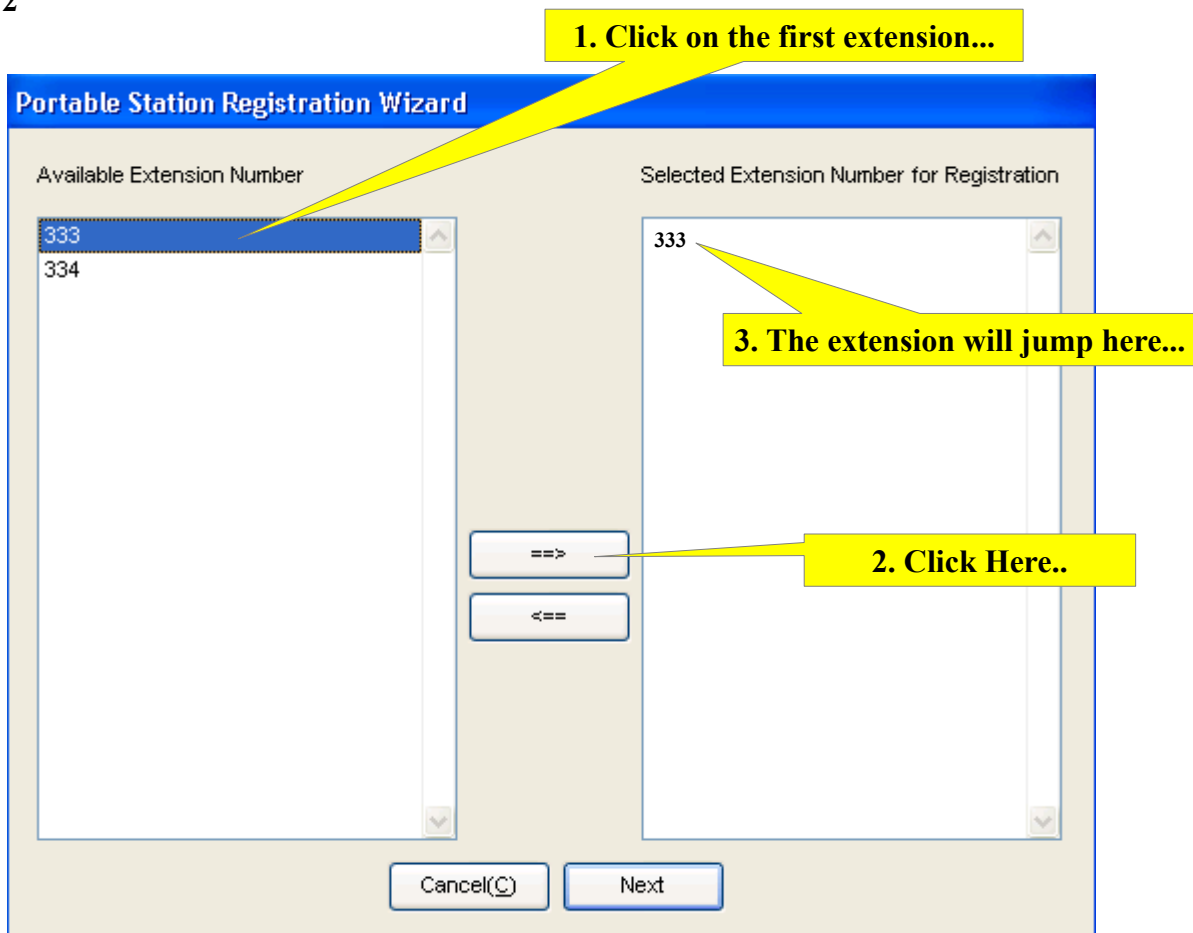
Panasonic KXTDA-50 KSU Setup & Register Cordless Telephones Telquest Tech Support



Note:

I suggest using Extension Numbers that start with 3 so that there is no conflict with other extensions.

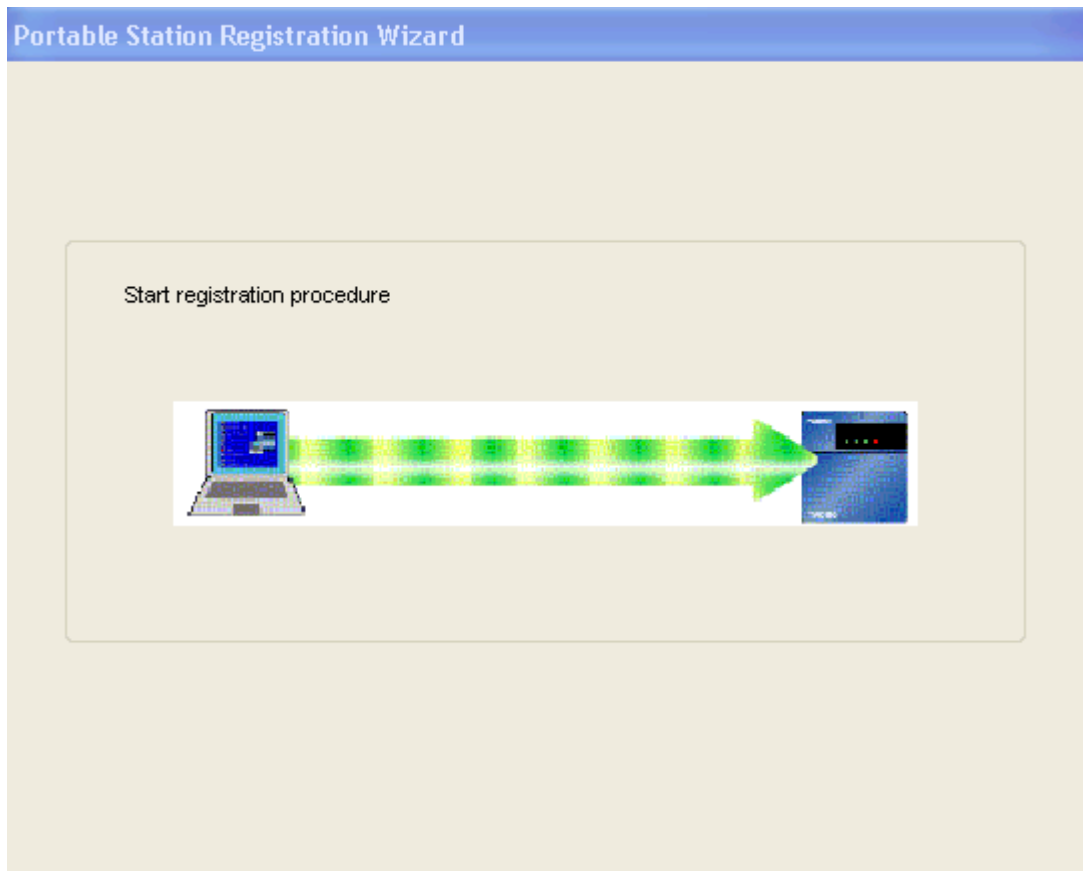
When you click on the Registration button (Step 4) it will take you to the next area below.



Repeat this cycle for each extension in the Available Extension Number list.

Then click the Next button.

**You may see an animation like this: Note: This screen may have been changed in newer systems
Panasonic has changes some of the screens since this Help Sheet was created.**



At this point, you will see a message with instructions on the cordless handset.

Follow these instructions on each cordless handset.

Note:

The Base Station (Antenna Box) can be plugged into any Digital Station Jack.

Try NOT to use Jack 1 on the built in Card (01).

The Base Station does not Register to the KSU.

The Cordless Handsets Register to the KSU via the Base Station.